

## The National Community Hubs Program

**Tony Fry**

National Program Manager, NCHP  
Vice President, Refuge of Hope

July 2015

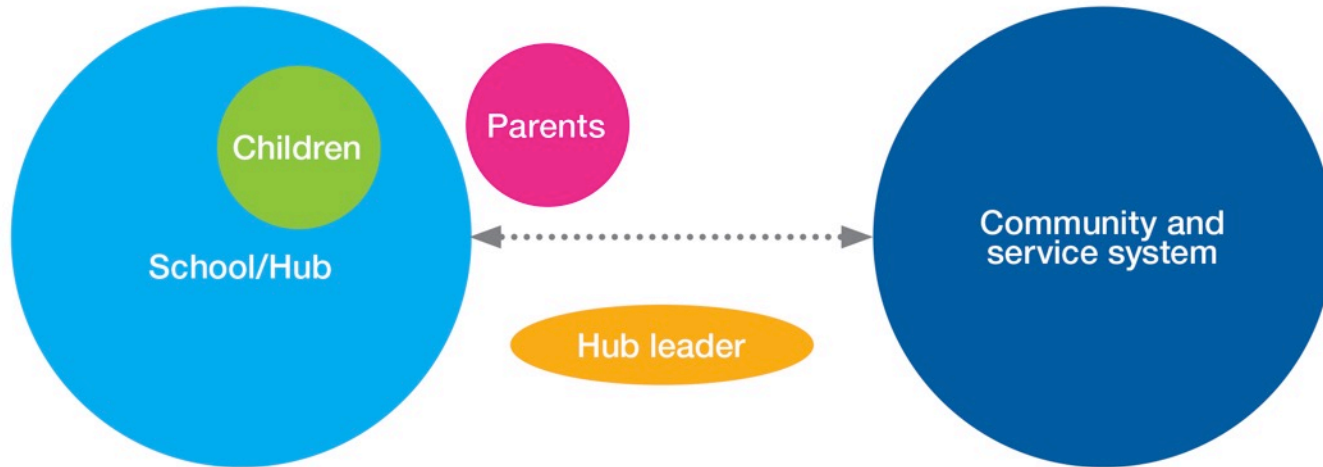


# Reaching migrant women and children



# Connecting migrant families to services

Community Hub to Service System



# A place-based, citizen-centric model



# 42 locations in NSW, Victoria and Queensland

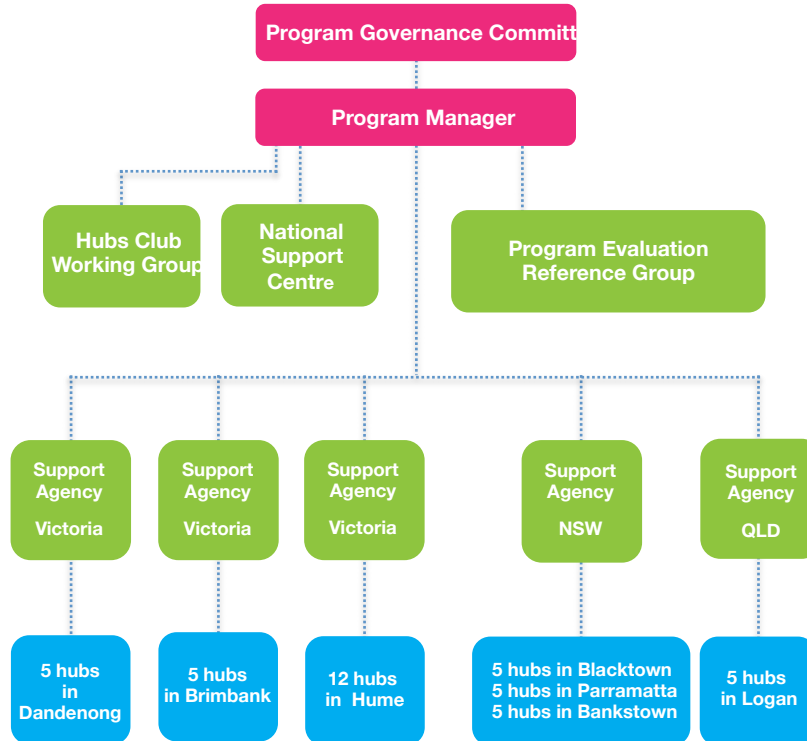
New South Wales		Queensland		Victoria	
LGA	No. of Hubs	LGA	No. of Hubs	LGA	No. of Hubs
Blacktown	5	Logan	5	Brimbank	5
Parramatta	5			Dandenong	5
Bankstown	5			Hume	12

# Targeting communities in most need

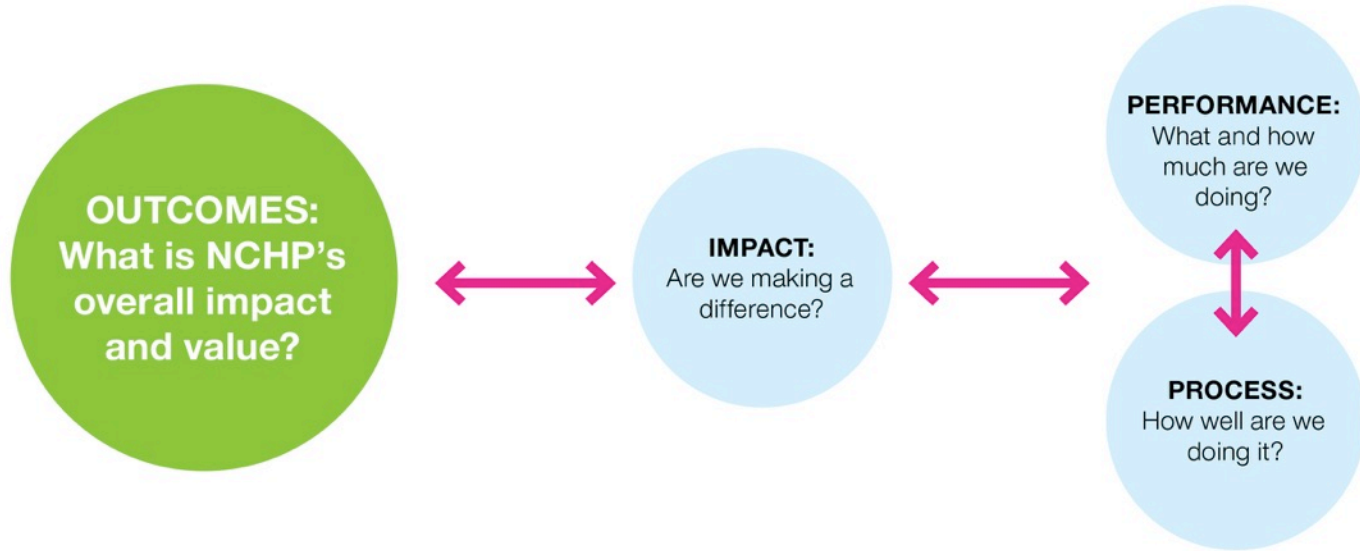
Table 8: Scanlon-Monash Index, domains of social cohesion, 2013

Domain	National	Shepparton	Murray Bridge	Atherton Tablelands	Mirrabooka	Logan
1. Sense of belonging	91	96	98	96	89	86
2. Sense of worth	93	93	93	88	92	81
3. Social justice and equity	97	81	87	86	88	59
4. Participation	89	91	77	94	77	81
5. Acceptance (rejection)	68	64	64	52	64	52
<b>Average</b>	<b>87.6</b>	<b>85.1</b>	<b>83.8</b>	<b>83.3</b>	<b>82.0</b>	<b>71.7</b>

# Robust multi-level governance

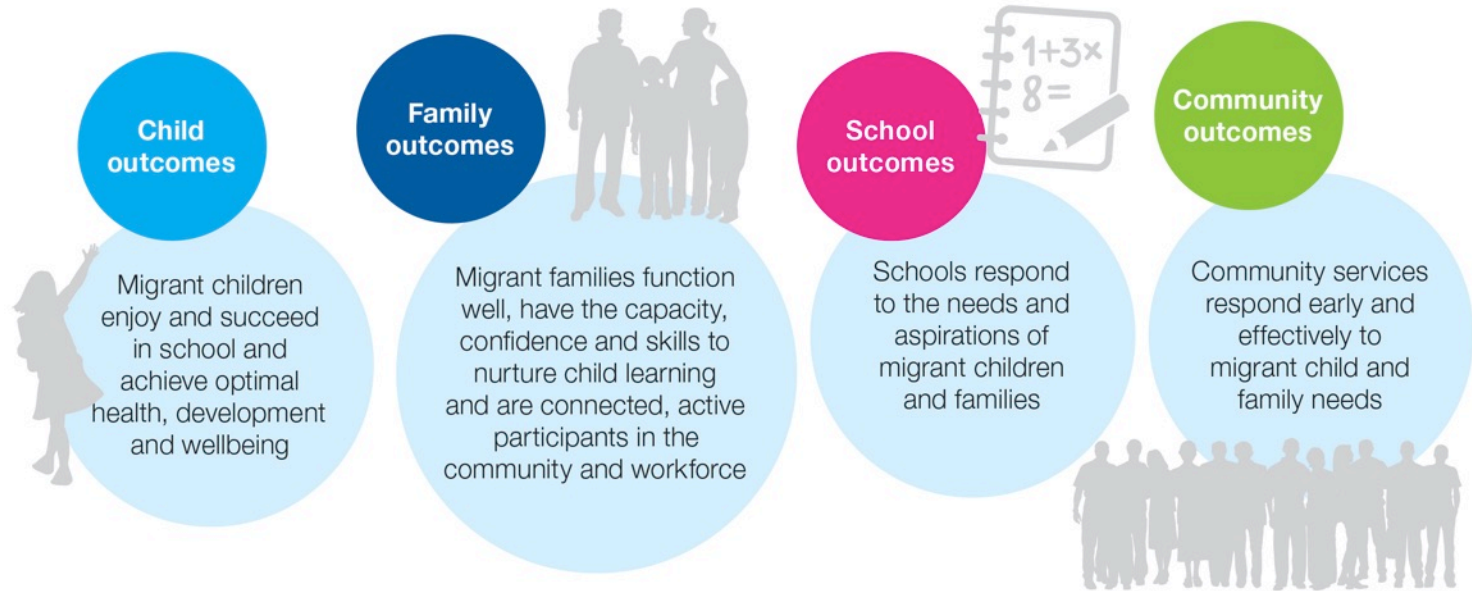


# Monitoring performance, evaluating impact





# An outcomes-based approach



# Core funding model

Program governance, management, administration, national support centre operations	
Scanlon Foundation through Refuge of Hope	\$400,000–500,000 p/a ongoing
Community hubs and their support	
Federal government funding:	
– Support Agency	\$10,000 p/a per hub
– each Community Hub	\$20,000 p/a per hub
Corporate / government support	\$10,000 p/a per hub
School / community centre contribution	\$20,000 p/a per hub
Community hubs programs and activities	Existing government services, local business funded programs, state and local government programs, philanthropic supported programs

# Extending our funding base



# A life and game-changing partnership

---

“If the philanthropic, government and corporate sectors can combine to deliver services to the community, it’s far more effective than taking an individual silo approach. And in the end, you get a very high social payback and a very high economic payback.”

**Peter Scanlon AO, Chairman and Founder, Scanlon Foundation**

# Making a difference where it counts

“Having been in education for over thirty years I’ve found that this support strategy engages those who need it the most and gives the ‘best bang for your buck’.

Situating it within a public school has enabled the shared use of government resources to really make a difference to these families.”

**Brent Kunkler, Principal, Chester Hill Public School, Bankstown, NSW.**



# Making a difference where it counts

“Having been in education for over thirty years I’ve found that this support strategy engages those who need it the most and gives the ‘best bang for your buck’.

Situating it within a public school has enabled the shared use of government resources to really make a difference to these families.”

**Brent Kunkler, Principal, Chester Hill Public School, Bankstown, NSW.**

